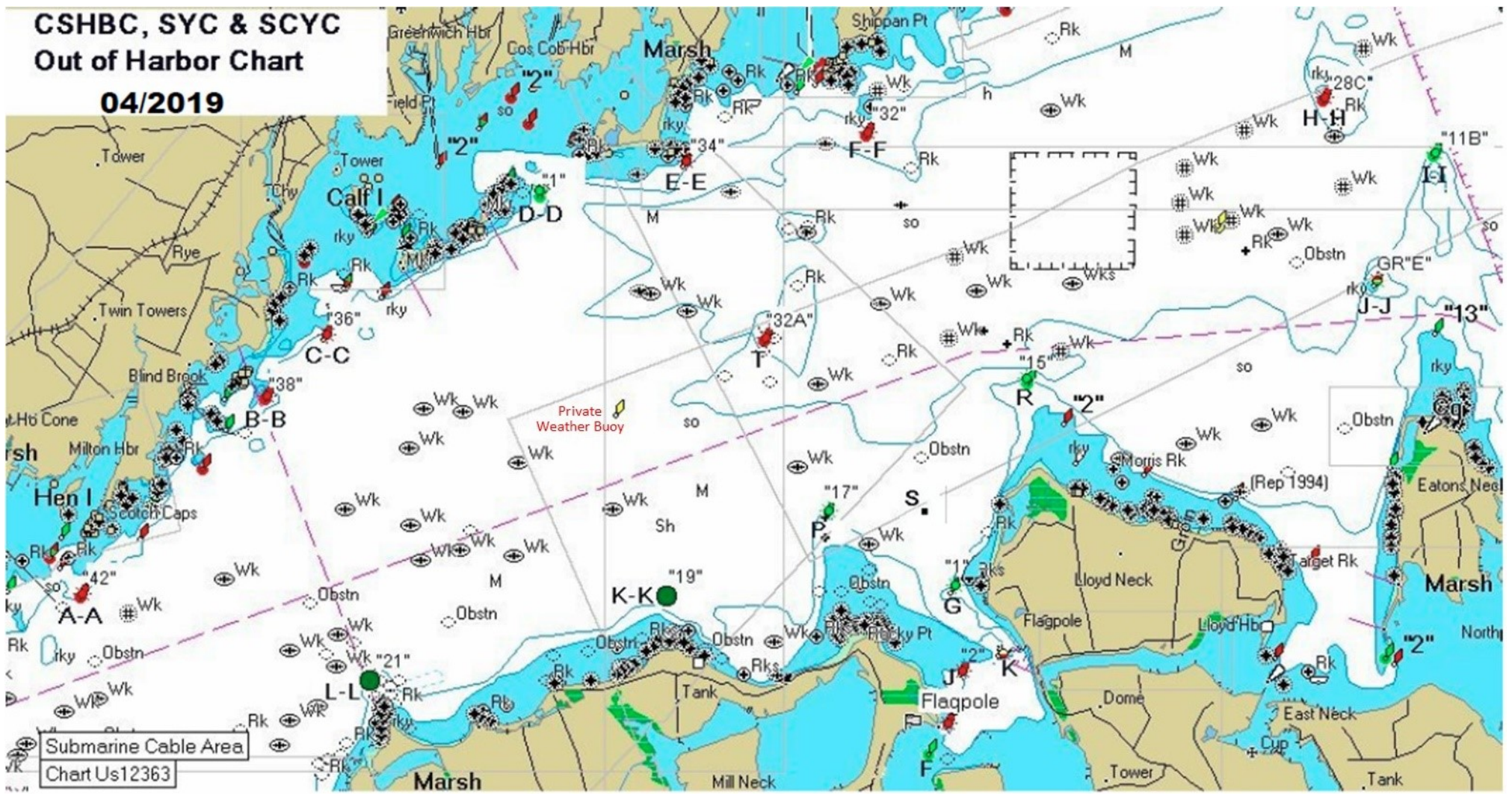


**CSHBC, SYC & SCYC  
Out of Harbor Chart  
04/2019**



Submarine Cable Area  
Chart Us12363

Mark	Location	Buoy	Characteristics
A-A	Mamaroneck Harbor	R'42"	FIR 2.5 sec Bell
B-B	Transport Shoal	R'38"	FIR 4 sec Bell
C-C	Bluefish Shoal	R'36"	Bell
D-D	Little Captain I. (Hen & Chickens)	G'1"	FI G 2.5 sec Gong
E-E	Greenwich Point	R'34"	Nun
F-F	The Cows (Stanford)	R'32"	FIR 6 sec Bell
F	Clubhouse Channel	G'3"	FI G 4 sec
G	West of Lloyd Neck	G'1"	Gong
H-H	Cable & Anchor Reef	R'28C"	FIR 4 sec Bell
I-I	Mid-Sound N. of Eaton's Neck	G'11B"	FI G 4 sec Gong

Mark	Location	Buoy	Characteristics
J-J	Eaton's Neck	GR'E"	Can - Red & Green
J	Sandbar - off C.I.	R'2"	Nun
K-K	Oak Neck	G'19"	Can
K	Lighthouse	Gvmt	Spire - Red/White
P	Centre Island Reef	G'17"	Bell
R	North of Lloyd Neck	G'15"	Gong
T	Mid-Sound Buoy	R'32A"	FIR 2.5 sec Bell

Plum Point	R'4"	Nun
------------	------	-----

All races start and finish at Mark S, a club mark located between Mark P and the end of Lloyd Neck Point.